

## Slindon Church of England Primary School

### November 2021



Dear Parents/ Carers

This newsletter is packed with exciting news as we continue to forge ahead with a more 'normal' Autumn Term. It was lovely to have parents and carers back in school for face-to-face meetings just before the half term holiday, to discuss how your children have been settling into school. Thank you all for the kind and positive feedback. All of our staff have been working incredibly hard to settle the children in after the disruption of last year and the momentum has certainly continued in different ways this term. We are enjoying Collective Worship in Coronation Hall every Monday and Friday afternoon. We will endeavour to take and share photos so that you can see what we are focusing on each week.

I have recently had exciting discussions with someone who is keen to help us develop our library and to fund this for us. We are looking at the possibility of moving the library to The Glade as we no longer all fit in the space to use it as we used to. Whilst this is only in very early stages of discussion it is exciting nevertheless! After the winter period is over, we will return to looking at spending money previously raised by the PFA on an outdoor classroom. This money is still there and remains ring-fenced for this project. Please let us know if the outdoor classroom is something you think you have the skills and knowledge to be involved with.

We have a number of new governors who I look forward to introducing you to, once all the preliminary meetings and paperwork are completed. I introduce you to two parents on the PFA (there's room for plenty more!) in this newsletter and outline the exciting events we have planned in the run up to Christmas. All of our planned activities and events this term are made with a degree of 'flexibility' which we hope will enable them to still go ahead, should any additional measures need to be introduced due to a rise in cases of Covid. Along with this newsletter, an important separate letter has been sent to you with information relevant to our school and transmission rates. Please read this letter carefully and speak with me if you have any questions or concerns.

Lucy Cooper

(Headteacher)



This half term we welcomed two new members of staff to our team. Mrs Sarah Wells (left) works until 1pm everyday, supporting the children in Catkin Class. Mrs Jane Denton (right) works every day for the full day, working with children in Catkin Class and particularly with Squirrels.

Both Sarah and Jane are relatively new to the area and we feel very fortunate to have them join our fabulous team– they have already made great relationships with the children and have settled in like they have been here forever. Do say hello to them both when you get the opportunity.

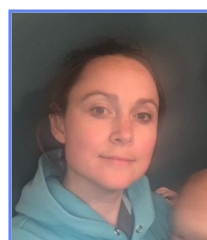
### Punctuality

Getting your children to school on time everyday is incredibly important. It ensures that children don't start their day worrying about what they have missed and having to come into their class late. We know that anxious feeling as adults and we don't want our children at school to start their day this way. As adults, it is our responsibility to make sure our children are at school on time. Being occasionally late is never a problem but if your child is persistently late for school, I will ask to speak with you to see if we can come up with some strategies for a smoother start to the day. Where needed, we can work together with external agencies for support.



### **Slindon Church of England Primary School**

#### **Parents and Friends Association (PFA)**



Last half term, two of our parents Katy and Emmie joined myself for the meeting to re-launch our PFA. Despite the low numbers, we made an optimistic plan for fundraising over the Christmas period and beyond. We would love to have more people involved in the PFA and we need 'helpers' for these fundraising events to go ahead. Over the following two pages, I have outlined when and how we need this help so please have a look and then contact the office, via telephone or email as soon as possible, so we can put your name against something and know that we are going to have enough people and support to go ahead.

We very much hope that all of these plans leading up to Christmas will go ahead, even if we have to change them slightly to align with any measures that may be required if Covid cases rise (such as returning to bubbles and holding events such as the Christmas Fayre outside). We are very much looking forward to the Christmas Carols that will feature in our plans for the Christmas Fayre this year. The children will be choosing the carols for the programme this week, so expect to hear lots of practicing and humming at home over the next few weeks!

### Christmas Film Nights



- **3.00pm– 5.15pm on Thursday 2nd December 2021**
  - Three parent helpers to prepare squash, popcorn and hots dogs. Help us to distribute them and help us to tidy up afterwards.
- **3.00pm– 5.15pm on Thursday 9th December 2021**
  - Three parent helpers to prepare squash, popcorn and hots dogs. Help us to distribute them and help us to tidy up afterwards.
- **3.00pm– 5.15pm on Thursday 16th December 2021**
  - Three parent helpers to prepare squash, popcorn and hots dogs. Help us to distribute them and help us to tidy up afterwards.

Please let us know if you can go to the shops to purchase the items needed for the film nights (squash, popcorn, hot dogs, buns). We will give you the money and will need a receipt.

### Receive and organise donations for the Christmas Fayre

- 8.45am- 9.15am on Friday 26th November 2021
  - One or two parent helpers to receive donations for 'Christmas sweet treats/ child hampers' at the door of The Glade and organise them in space provided.
- 8.45am- 9.15am on Friday 3rd December 2021
  - One or two parent helpers to receive donations for 'Christmas sweet treats/ alcohol/ adult hampers' at the door of The Glade and organise them in space provided.
- 8.45am- 9.15am on Thursday 9th December 2021
  - One or two parent helpers to receive donations for Tombola prizes at the door of The Glade and organise them in space provided.
- 8.45am- 9.15am on Wednesday 15th December 2021
  - One or two parent helpers to receive donations for the Christmas Cake Sale at the door of The Glade and organise them in space provided.

### Help us prepare for the Christmas Fayre

- Monday 13th December 2021– Two parents/ carers to come and organise prizes and prepare for Tombola stand.
- Wednesday 15th December 2021 (from 1pm) – Several parents/ carers to help us set up for the Christmas Fayre, including setting up a Santa's Grotto (Covid cases permitting), hampers., cake sale, stalls and refreshments area and to prepare the staff car park as an area for Christmas Carol singing



### Help us during the Christmas Fayre

- Wednesday 15th December 2021- 3.00-.5.15pm– Several parents/ carers to run a stall such as the refreshment stall/ book stall etc.

Do you know a local business who may be in a position to help us by donating a hamper or items for the raffle? If so, we have prepared a letter inviting their support– we just need your help in providing details of the business and person of contact. We will either post the letter to them, or perhaps you could pass it on?

### **Are you a horticultural hero?**

If so, we'd love to hear from you to advise of how best to look after our grounds, such as what to plant and when in the newly laid bedding areas around Catkin Class and how best to look after our fruit cage throughout the winter.

We have a contract with a grounds maintenance company but there are some areas that they are not contracted to attend to. In Spring Term 2 we will look to organise a working party but we'd love a knowledgeable person to pass on advice in the meantime. Please contact the school office if that person is you!



Ivy continues to thrive in our school as much as our children do, and is fully accustomed to the busier comings and goings than she was familiar with last year. Last half term, Ivy successfully completed a 2-hour assessment to see if she has the right temperament to begin on-going training to work directly with children. We have started a new chapter of her training this half term with a company called Canine Assisted Learning who work with school dogs to support the emotional wellbeing of children with a focus on positive mental health. The children will write a 'Pupdate' later this term with more information about Ivy and her training.

## Important Dates to Remember for the Autumn Term 2

Remember you can keep an eye on the calendar on our school website by just googling it from your mobile phone— you don't need to log in to do this. Texts are sometimes sent out as a helpful reminder.

- **Friday 19th November 2021– Children in Need Day**– See separate letter that has been emailed out. Children can come to school in full fancy dress, in their own clothes or in Pudsey related colours, for a donation of £1 for Children in Need.
- **Friday 26th November 2021– Non-Uniform Day**  
*For a contribution of Christmas sweet treats or an item suitable for a child's Christmas Hamper*
- **Thursday 2nd December 2021– Christmas Film Night** (Separate letter will be sent out).
- **Friday 3rd December 2021– Non-Uniform Day**  
*For a contribution of Christmas sweet treats or an item suitable for an adult Christmas Hamper*
- **Thursday 9th December 2021– Non-Uniform Day**  
*For a contribution of a prize for the Tombola*
- **Thursday 9th December 2021– Christmas Film Night** (Separate letter will be sent out).
- **Friday 10th December 2021– Save The Children Christmas Jumper Day**– Wear your Christmas Jumper to school for a £1 donation for Save the Children.
- **Wednesday 15th December 2021– Non-Uniform Day**  
*For a contribution for the Christmas Cake Sale at the Christmas Fayre*
- **Wednesday 15th December 2021 —Christmas Fayre 3.30-5.00pm**
- **Wednesday 15th December 2021**– Chartwells Christmas Lunch (for children who have school dinners).
- **Thursday 16th December 2021– Christmas Film Night** (Separate letter will be sent out).
- **Friday 17th December 2021**– Catkin Class Nativity in Coronation Hall at 2pm.
- **Friday 17th December 2021**– Last day of the Autumn Term
- **Tuesday 4th January 2021**– INSET DAY– No children in school
- **Wednesday 5th January 2021**– First day back to school for the Spring Term

### A few gentle reminders.....

- Make sure your child's name is on all their items of clothing. We can only return lost items to you if they are named. Please also check your child has brought their own items home each day.
- Bookbags of children in Catkin Class should be brought into school every Tuesday and Friday.
- Bookbags for children in Acorn and Chestnut Class should be brought into school each day.
- Please ensure your child completes their daily home learning expectations.
- Remember that we are a no nut school– this includes any contributions for the Christmas cake sale for the Christmas Fayre.
- Parking– Please try not to park in Meadsway (the residential houses nearest school) and instead please try to park in Reynolds Lane (the road that The Forge is on). When parking in Reynolds Lane, please ensure you leave enough room for residents to get in and out of their driveways easily. Our neighbours offer us great support and we want to return their kindness by parking considerately.



Not sure what's going on at school?

Keep an eye on our school website, including the school calendar where you can find all the information you need.

[www.slindonprimary.co.uk](http://www.slindonprimary.co.uk)



SLINDON  
CHURCH OF  
ENGLAND  
PRIMARY  
SCHOOL



Meadsway  
Slindon  
Arundel  
West Sussex  
BN18 0QU  
Phone: 01243 814330  
Fax: 01243 814556  
E-mail: [office@slindonprimary.co.uk](mailto:office@slindonprimary.co.uk)  
Website: [www.slindonprimary.co.uk](http://www.slindonprimary.co.uk)  
Headteacher: Miss Lucy Cooper

### Slindon Church of England Primary School Facebook Page



We enjoy sharing what's going on in school for our families and for potential families who are looking at our school. The page won't be used to answer questions or communicate events so please continue to look at the newsletters, our calendar on the school website or call the school office if you have any queries.

### ivy\_the\_school\_dog



75  
Posts

161  
Followers

110  
Following

Ivy the school dog 🐾  
1 year old  
School dog in West Sussex  
Proud sock thief 🧦  
#ivytheschooldog  
[www.slindonprimary.co.uk/](http://www.slindonprimary.co.uk/)

